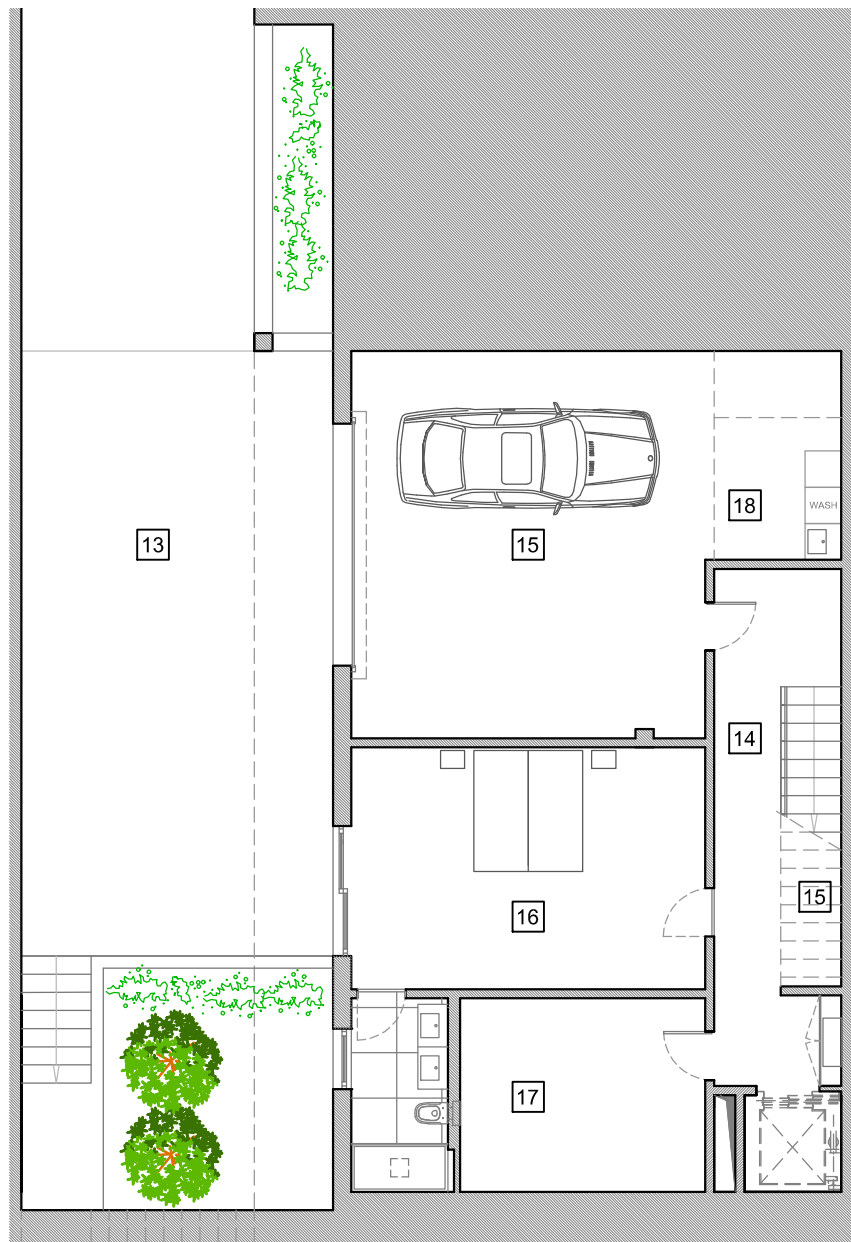
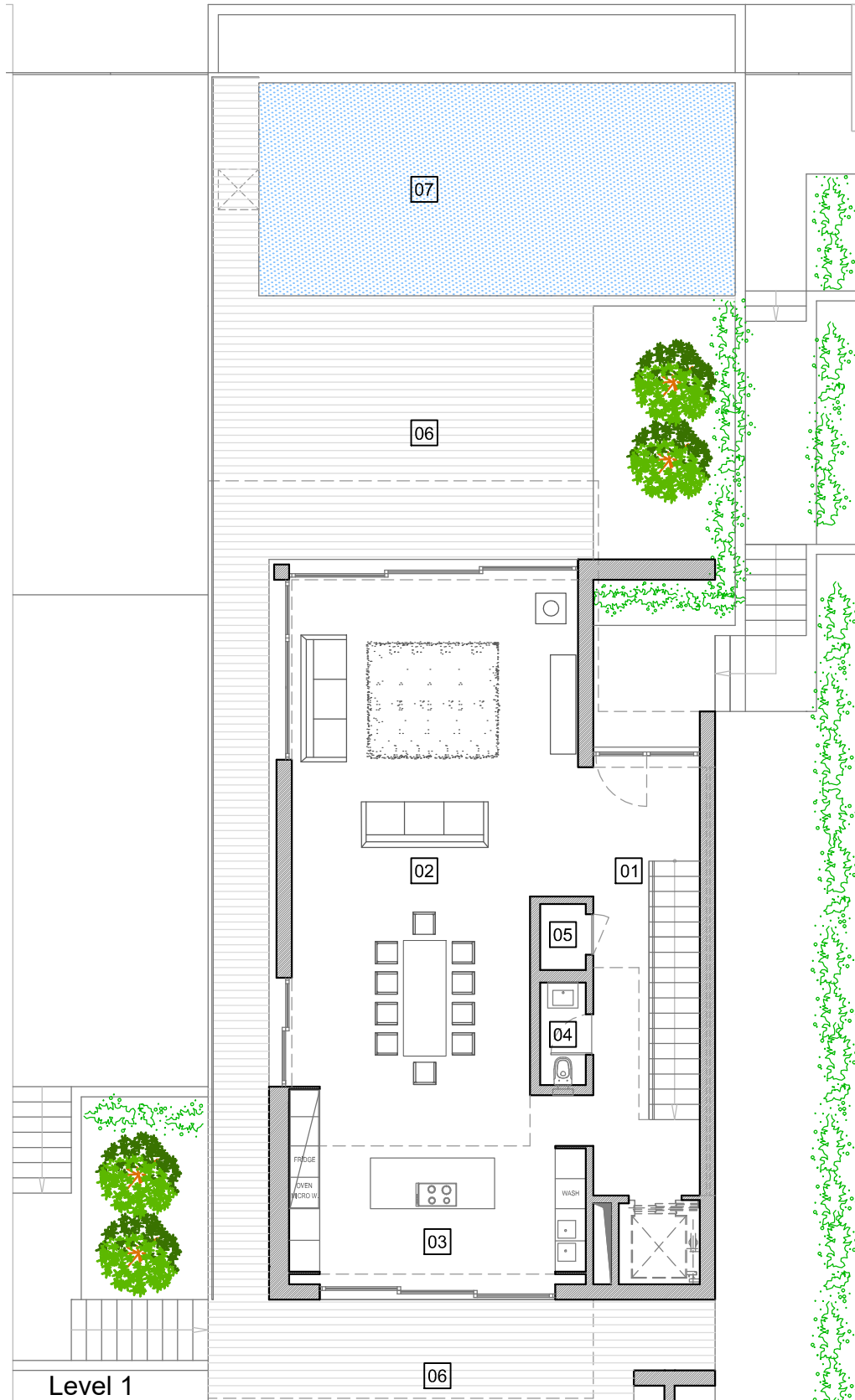


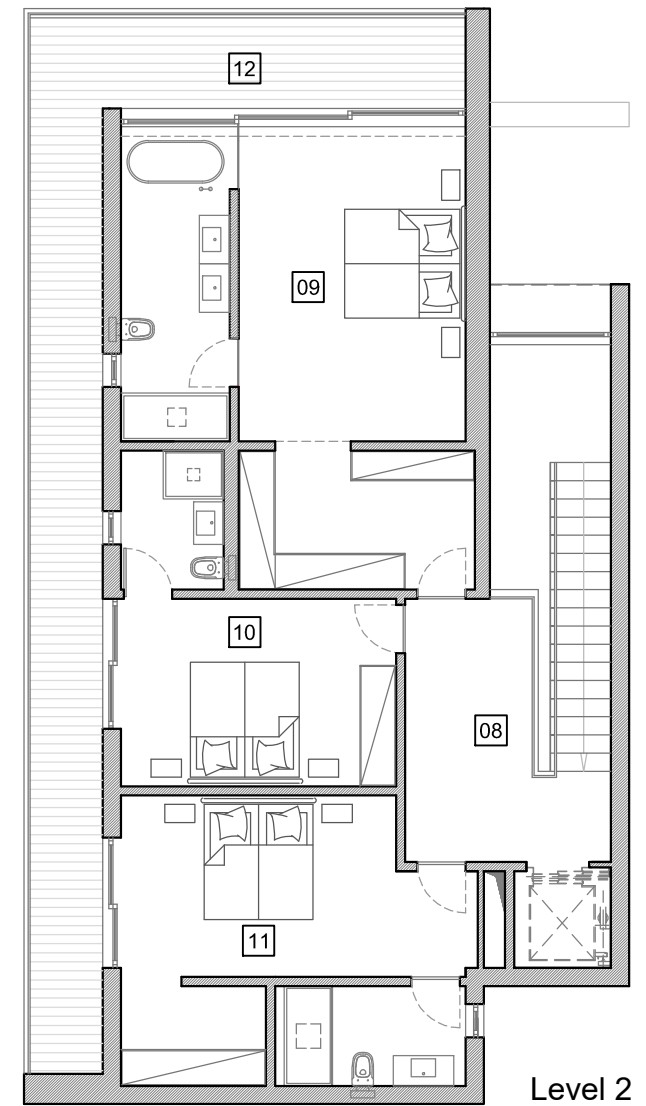
# Villa 3



Level 0



Level 1



Level 2

# Heights 3

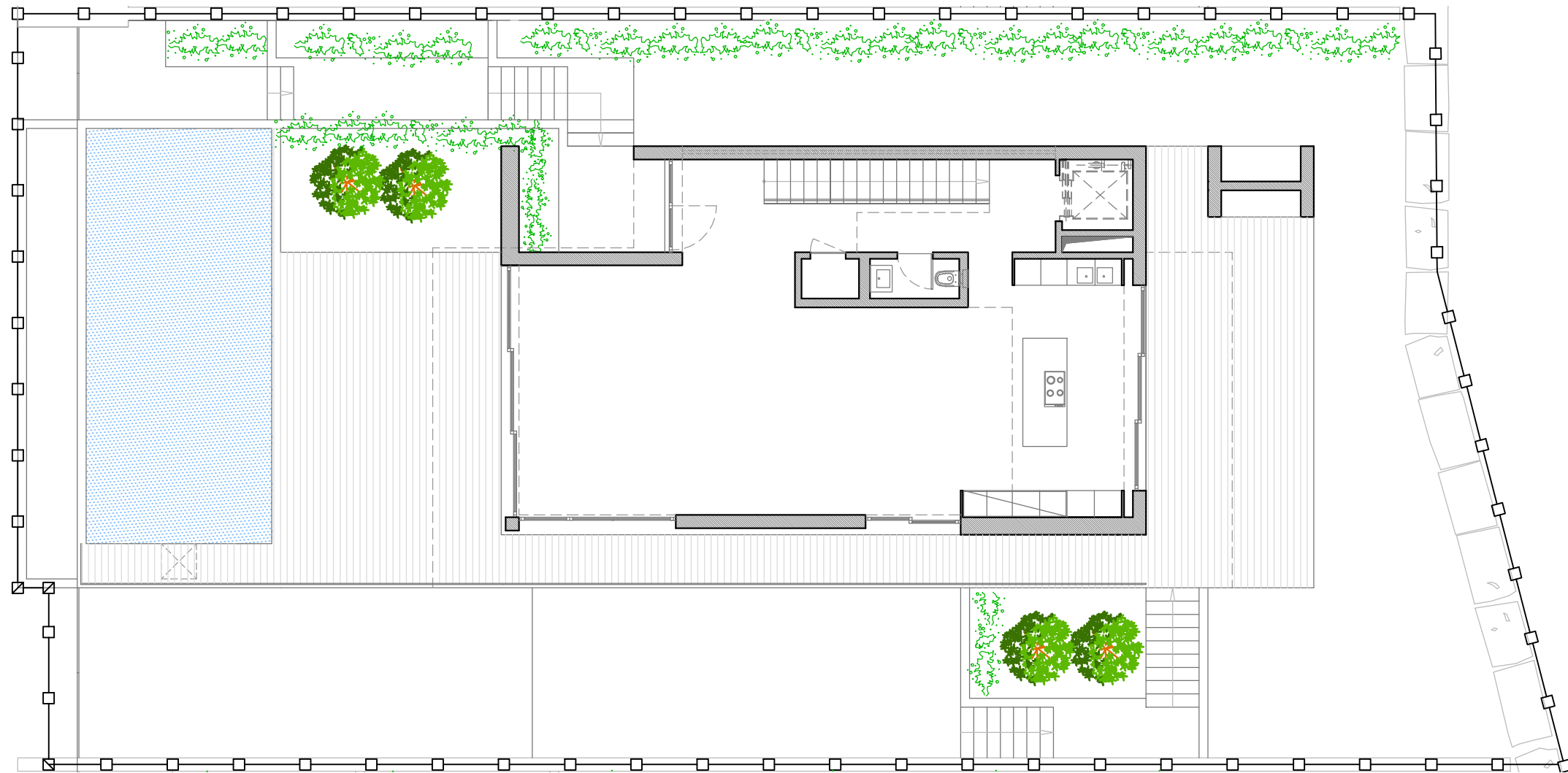
PERALTA

01	Entrance Hall	18.0 m2	07	Pool	40.0 m2	13	Patio	90.0 m2
02	Living Room	55.4 m2	08	Hall	11.9 m2	14	Circulation	12.8 m2
03	Kitchen	21.0 m2	09	Master Suite	39.6 m2	15	Suite	28.7 m2
04	Bathroom	1.90 m2	10	Suite	18.4 m2	16	Lockable Storage	12.4 m2
05	Closet	1.20 m2	11	Suite	26.0 m2	17	Garage	37.2 m2
06	Terraces	101.2 m2	12	Terrace	32.8 m2	18	Laundry	7.7 m2

**Summary (all levels)**

Plot Area	559.5 m2
Covered Area (council area)	380.0 m2
Covered Area (all levels)	445.0 m2
All Terraces, Patio & Pool	264.0 m2
Gross Built Area	709.0 m2
Garden	173.0 m2

# Plot 3 + Villa Implantation



Plot

## Heights 3 PERALTA

Summary (all levels)		
Plot Area	□—□—□—□—□	559.5 m <sup>2</sup>
Covered Area (council area)	.....	380.0 m <sup>2</sup>
Covered Area (all levels)	.....	445.0 m <sup>2</sup>
All Terraces, Patio & Pool	.....	264.0 m <sup>2</sup>
Gross Built Area	.....	709.0 m <sup>2</sup>
Garden	.....	173.0 m <sup>2</sup>

Measurements are approximate