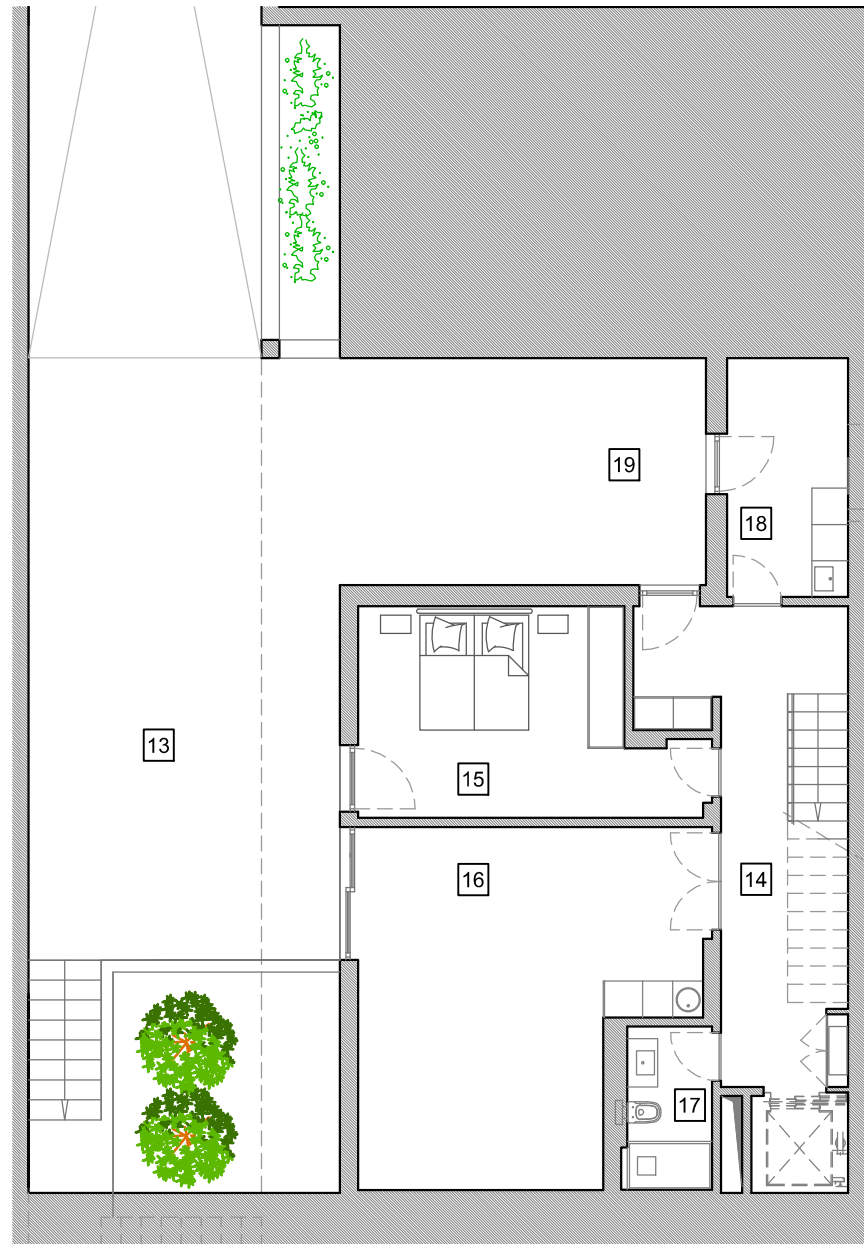
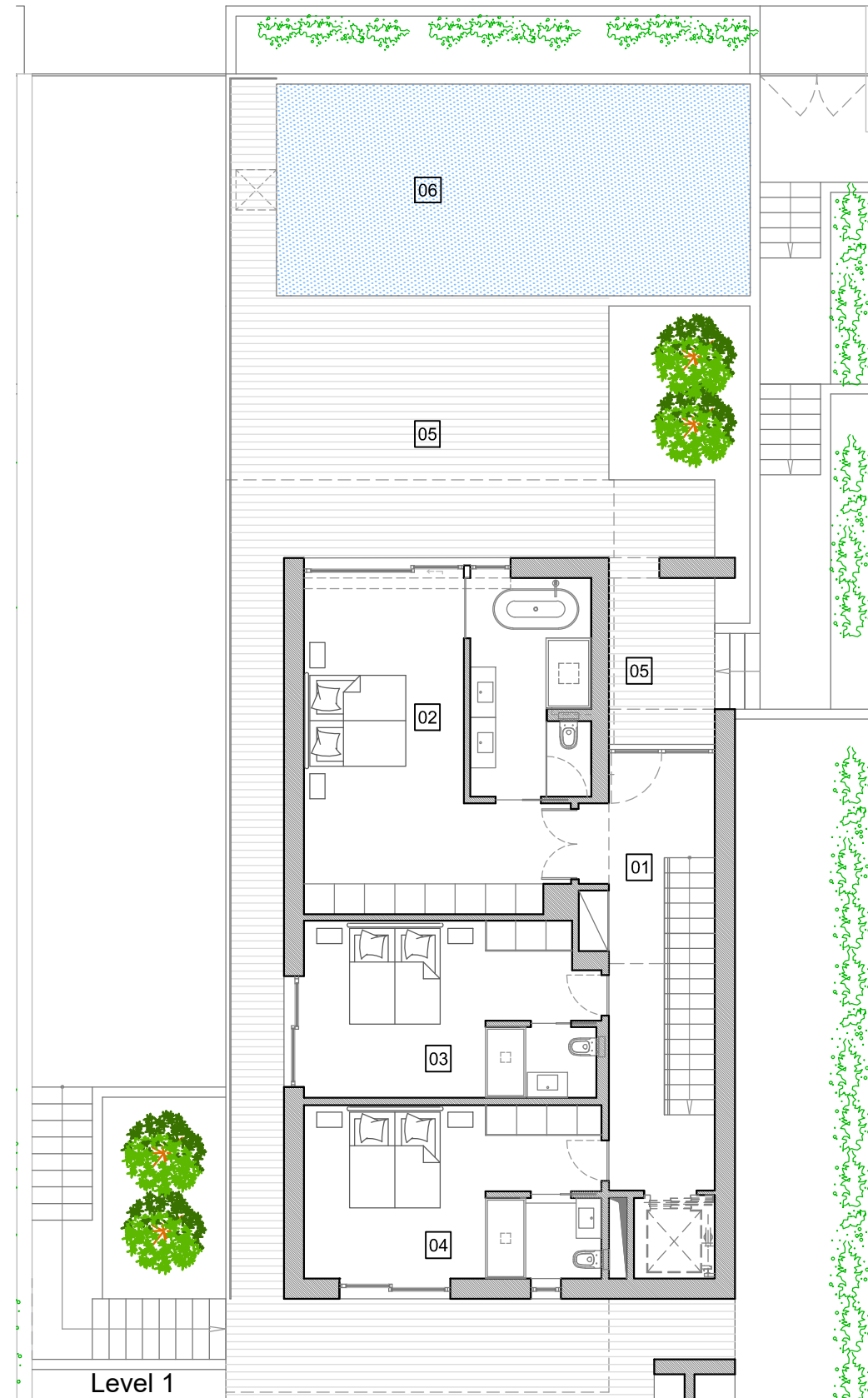


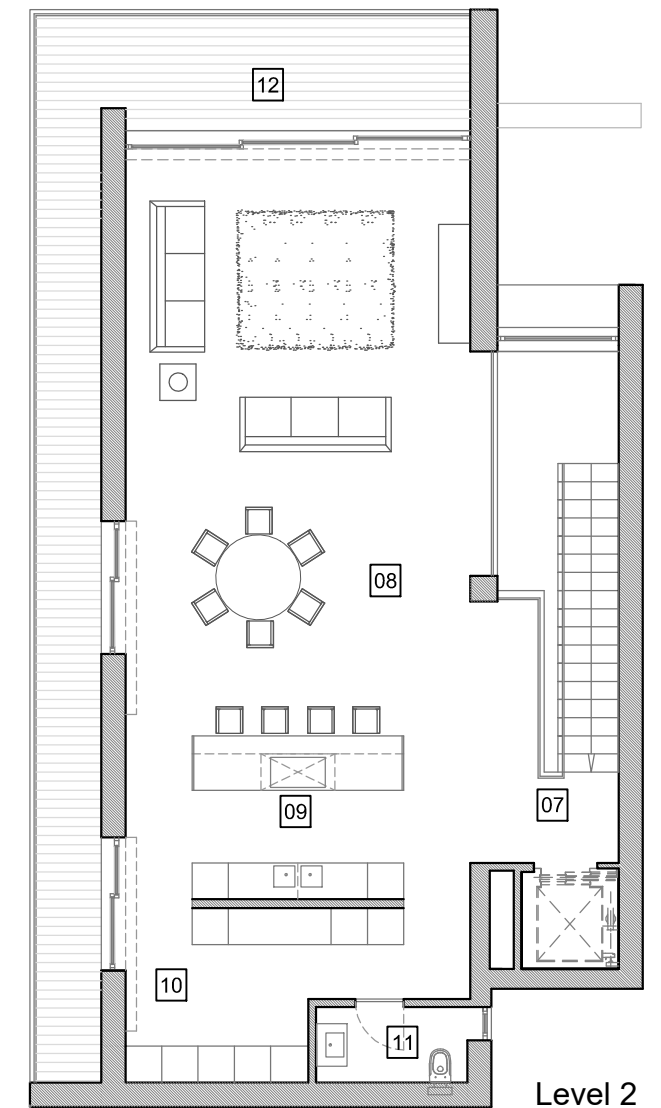
## Villa 7



Level 0



Level 1



Level 2

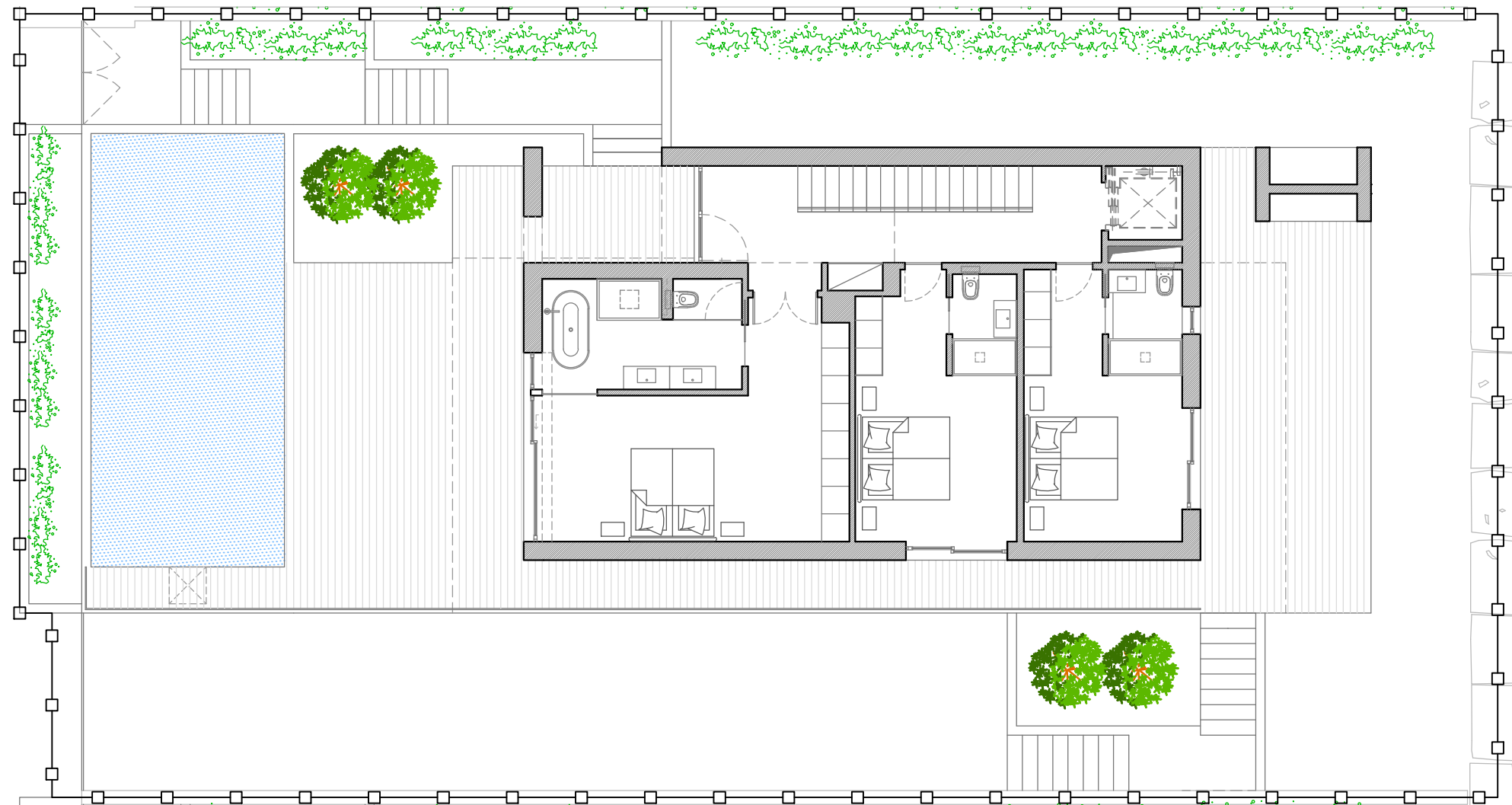
## Heights 3 PERALTA

01	Entrance Hall	18.0 m2	08	Living room	57.0 m2	15	Bedroom	17.2 m2
02	Suite	36.7 m2	09	Kitchen	13.7 m2	16	Living Room	29.8 m2
03	Suite	20.0 m2	10	Pantry	12.7 m2	17	Bathroom	3.8 m2
04	Suite	20.3 m2	11	Bathroom	3.1 m2	18	Laundry	7.8 m2
05	Terraces	104.9 m2	12	Terrace	33.1 m2	19	Parking	22.7 m2
06	Pool	40.00 m2	13	Patio	90.0 m2			
07	Hall	7.1 m2	14	Circulation	13.2 m2			

Summary (all levels)		
Plot Area		543.0 m2
Covered Area (council area)	.....	380.0 m2
Covered Area (all levels)	.....	445.0 m2
All Terraces, Patio & Pool	.....	268.0 m2
Gross Built Area	.....	713.0 m2
Garden	.....	147.0 m2

Measurements are approximate

## Plot 7 + Villa Implantation




1 2 3 4 5m

Plot

# Heights 3

PERALTA

Summary (all levels)		
Plot Area		543.0 m2
Covered Area (council area)	.....	380.0 m2
Covered Area (all levels)	.....	445.0 m2
All Terraces, Patio & Pool	.....	268.0 m2
Gross Built Area	.....	713.0 m2
Garden	.....	147.0 m2

Measurements are approximate